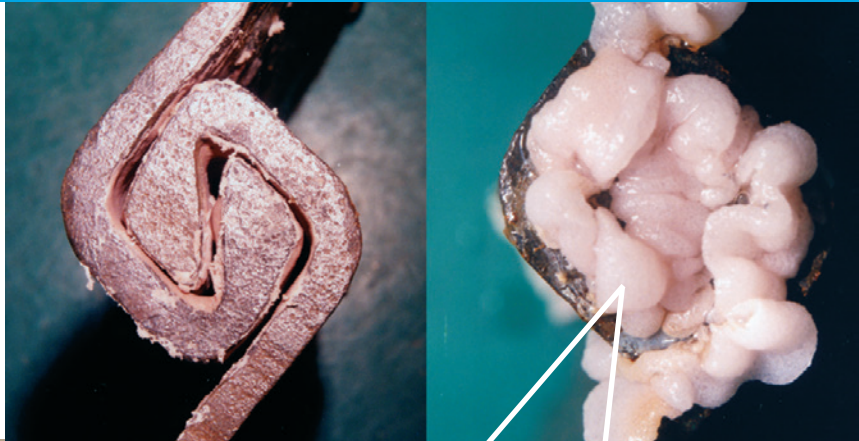


Interlock Sealing

Pile Lock

Pile Lock is the best option when the sealing needs to be completely waterproof. This product expands up to 20 times its original volume when it comes into contact with water. This way we can guarantee a 100% waterproof solution. We have the unique exclusive right within Europe for Pile Lock lock seals with plastic (PU).



Pertex Bituminous filling

This type of interlock sealing is very interesting from an economic point of view and reduces leaking to a large extent.



Standard



On request

Interlock Sealing

InfraRentals Expanding Seal

When maximum tightness is required for sheet piling, especially in landfill construction with contaminated soil, a polyurethane (PU) based interlock seal provides the solution in many cases. InfraRentals Expanding Seal is a product that leads to a watertight wall. The water-swellable polyurethane (PU) based sealant swells on contact with moisture up to 350% of its original dry state. It is applied to the sheet pile wall interlocks prior to site with a simple putty gun to seal them.

InfraRentals Expanding Seal has been specifically designed for the following applications

- Sealing of interlocks between sheet piles.
- Sealing of construction joints in cast-in-place concrete in a damp substrate.
- Sealing of joints in prefabricated concrete elements (shafts, cable or pipe penetrations in wet or underwater conditions).

Advantages of InfraRentals Expanding Seal

- Due to its special composition, InfraRentals Expanding Seal can be applied to damp substrates and also under water.
- InfraRentals Expanding Seal can be applied to steel, concrete, PVC and HDPE.
- The excellent adhesion and backfilling properties of InfraRentals Expanding Seal. The excellent adhesion and filling properties of InfraRentals Expanding Seal allow safe void filling even on damp and uneven surfaces.

- In contact with water, InfraRentals Expanding Seal swells to approximately 350% of its original dry state.
- InfraRentals Expanding Seal is a very flexible sealant and can adapt to uneven surfaces.
- Easy installation with a standard putty gun.
- InfraRentals Expanding Seal is functional for the life of the structure.
- Excellent chemical resistance.
- Resistant to petroleum products, mineral and organic oils and greases.
- InfraRentals Expanding Seal is environmentally friendly.

Environmental friendliness

- InfraRentals Expanding Seal is a water-swellable, solvent-free, elastic polyurethane-based sealant.
- InfraRentals Expanding Seal swells and reacts when water or moisture is present. Curing depends on temperature and humidity. High temperature and high humidity result in faster curing time. Curing of InfraRentals Expanding Seal takes approximately 24-36 hours. After curing, the estimated service life is approximately 100 years. During its life cycle, InfraRentals Expanding Seal does not release any substances that are harmful to the environment, groundwater or soil.

Consumption

Nozzle diameter	310 ml Length (cartridge)	600 ml Length (sausage)
3 mm	20 - 25 m	40 - 50 m
6 mm	8 - 10 m	16 - 20 m
8 mm	4 - 5 m	8 - 10 m
10 mm	Ca. 3 m	Ca. 6 m



Application



Swells 24-36 hours after application

